

# THE PADDOCK ECO VILLAGE,

CASTLEMAINE, VICTORIA

LIVING WELL,  
LIVING GREEN



EMBRACE A HIGH QUALITY, SUSTAINABLE LIFESTYLE  
IN ONE OF VICTORIA'S MOST DYNAMIC, INTERESTING TOWNS.

- ✓ 27 architect-designed eco homes.
- ✓ 1.5 to 4 bedrooms.
- ✓ Beautiful bushland setting, with shared food gardens.
- ✓ From \$390,000 to \$650,000.

STAGE 1 RELEASE. OFF-PLAN. ONLY 2 HOMES LEFT!

- ✓ Stage 1 completion date: Jan/Feb 2019
- ✓ Stages 2, 3 and 4 – taking reservations.

**Contact us today to find out more**

Tel: 0419 327 791 • Email: [info@thepaddockcastlemaine.com.au](mailto:info@thepaddockcastlemaine.com.au) • [thepaddock.com.au](http://thepaddock.com.au)

# THE PADDOCK ECO VILLAGE,

CASTLEMAINE, VICTORIA

LIVING WELL,  
LIVING GREEN

## WHAT YOU GET

- ✓ Your own plot and private garden (freehold title)
- ✓ Shared gardens, community centre, sheds
- ✓ Landscape designed, supporting native habitats

## MASTERPLAN



Contact us today to find out more

Tel: 0419 327 791 • Email: [info@thepaddockcastlemaine.com.au](mailto:info@thepaddockcastlemaine.com.au) • [thepaddock.com.au](http://thepaddock.com.au)

# THE PADDOCK ECO VILLAGE,

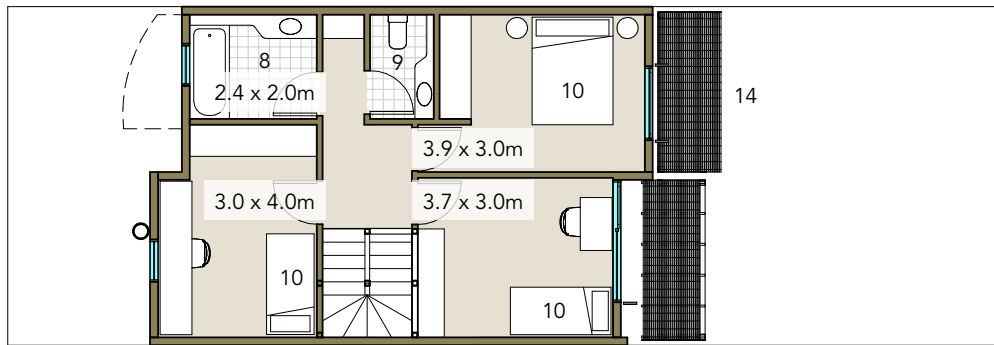
CASTLEMAINE, VICTORIA

LIVING WELL,  
LIVING GREEN

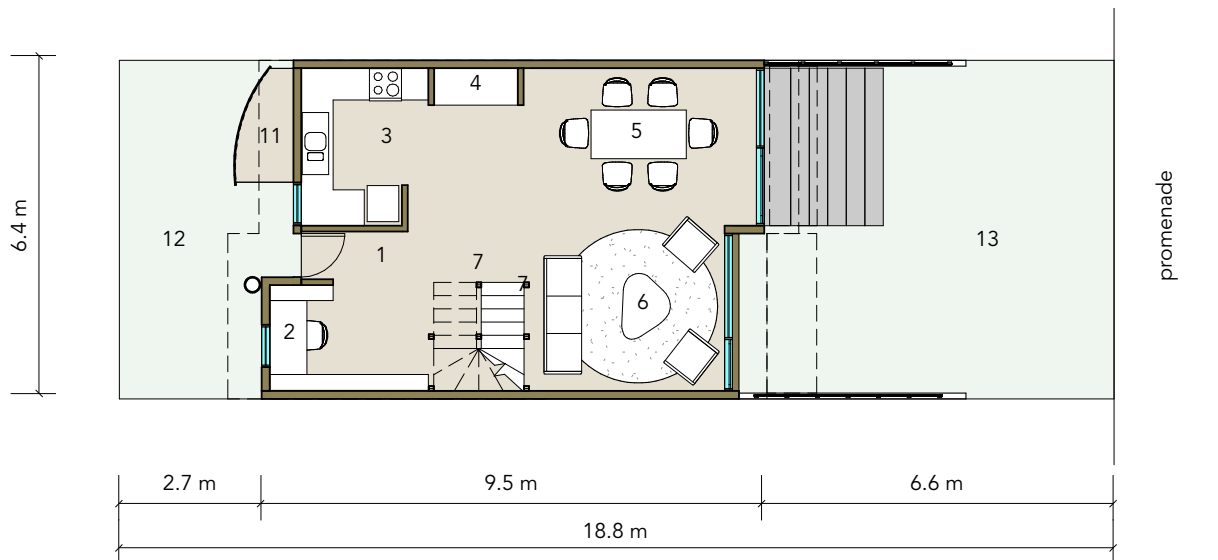
## EXAMPLE PLAN

### 3 BEDROOM HOME

- ✓ Architect-designed, customised for you.
- ✓ Passive solar design / 8.5 star energy rating (avg)
- ✓ Low ongoing energy bills



first floor



ground floor

- |           |                   |
|-----------|-------------------|
| 1 entry   | 8 bathroom        |
| 2 study   | 9 toilet          |
| 3 kitchen | 10 bedroom        |
| 4 pantry  | 11 storage        |
| 5 dining  | 12 front garden   |
| 6 living  | 13 rear garden    |
| 7 stair   | 14 pergola/awning |

**Contact us today to find out more**

Tel: 0419 327 791 • Email: [info@thepaddockcastlemaine.com.au](mailto:info@thepaddockcastlemaine.com.au) • [thepaddock.com.au](http://thepaddock.com.au)

# THE PADDOCK ECO VILLAGE, CASTLEMAINE, VICTORIA

THE PADDOCK SITE  
15-21 RECKLEBEN ST, CASTLEMAINE

## COMMONLY ASKED QUESTIONS

### WHERE IS CASTLEMAINE?

- ✓ 120km northwest of Melbourne.
- ✓ What are the transport connections like?
- ✓ Train – 1.25 to 1.5 hours to Melbourne
- ✓ Bus / road – 80-90 minutes by Calder Freeway to Melbourne

### HOW MANY PEOPLE LIVE IN CASTLEMAINE?

- ✓ 8,000

### WHAT'S SPECIAL ABOUT CASTLEMAINE?

- ✓ Rich gold mining heritage
- ✓ Beauty of its built and natural environments
- ✓ Dynamic cultural centre, with a strong sense of community

### ARE PETS ALLOWED AT THE PADDOCK?

- ✓ Yes if well managed.

### WHAT BUILDING MATERIALS WILL BE USED?

- ✓ Timber facades
- ✓ Brick separation walls
- ✓ Hardwood timber for the living space floors
- ✓ Plaster for the walls
- ✓ Tiles for all wet areas
- ✓ Woollen carpets for the bedrooms

### HOW MANY PROPERTIES IN STAGE 1?

- ✓ 7 homes (each with a freehold title) and one community centre



**Contact us today to find out more**

Tel: 0419 327 791 • Email: [info@thepaddockcastlemaine.com.au](mailto:info@thepaddockcastlemaine.com.au) • [thepaddock.com.au](http://thepaddock.com.au)